

Approved	Checked	Designed	DEVELOPMENT SPECIFICATION							
<i>T. Ikeda</i>	<i>H. Ito</i>	<i>K. Kobayashi</i>	P/N : LN J 1 1 5 W 8 6 R A				1	8		4
T	Y	P	E	Bi-color (Green / Red) Light Emitting Diode						
A P P L I C A T I O N				Indicators						
M A T E R I A L				Green (GaIn) / Red(GaAlAs)						
O U T L I N E				Attached						
A B S O L U T E				※1 P	※2 I _{FP}	※3 I _{FIC}	V _R	Topr	Tstg	
M A X I M U M				(G) (R)	(G) (R)	(G) (R)	(G) (R)			
R A T I N G S				40 55	50 60	10 20	5 3	-30~+85	-40~+100	
C O N D I T I O N				T _a = 25 ± 3 °C						
Test Specification										
Item		Symbol	Condition			Type	Limit		Unit	
							Min	Max		
Green										
Forward Voltage		V _F	I _F = 5 mA			3.0		3.7	V	
Reverse Leakage Current		I _R	V _R = 5 V					10	μA	
Luminous Intensity ※4		I ₀	I _F = 5 mA · DC			34	12.9		mc	
Peak Emission Wavelength		λ _p	I _F = 5 mA · DC			525			nm	
Spectral Line Half Width		Δλ	I _F = 5 mA · DC			45			nm	
Red										
Forward Voltage		V _F	I _F = 10 mA			1.72		2.5	V	
Reverse Leakage Current		I _R	V _R = 3 V					100	μA	
Luminous Intensity ※4		I ₀	I _F = 10 mA · DC			6.7	2.8		mc	
Peak Emission Wavelength		λ _p	I _F = 10 mA · DC			655			nm	
Spectral Line Half Width		Δλ	I _F = 10 mA · DC			20			nm	
※1 (G) : Green (R) : Red ※2 The condition of I _{FP} is duty 10 % , pulse width 1 ms. Please contact the Panasonic local office if you design at low current (below 1mA DC) or pulse current operation and have any questions. ※3 When 2 light emitted at the same time , the total current (I _{FP} or I _{FIC}) must be (G) I _{FP} < 50 mA , I _{FIC} < 9 mA (R) I _{FP} < 60 mA , I _{FIC} < 18 mA ※4 Measurement Tolerance is ±20%. ※5 Compositions of the lead····Cu/Ni/Au plating ※6 Package····Light white diffusion type. ※7 Soldering conditions····Refer to Handling note.										
Jun. 28. 2001										

Approved Checked Designed

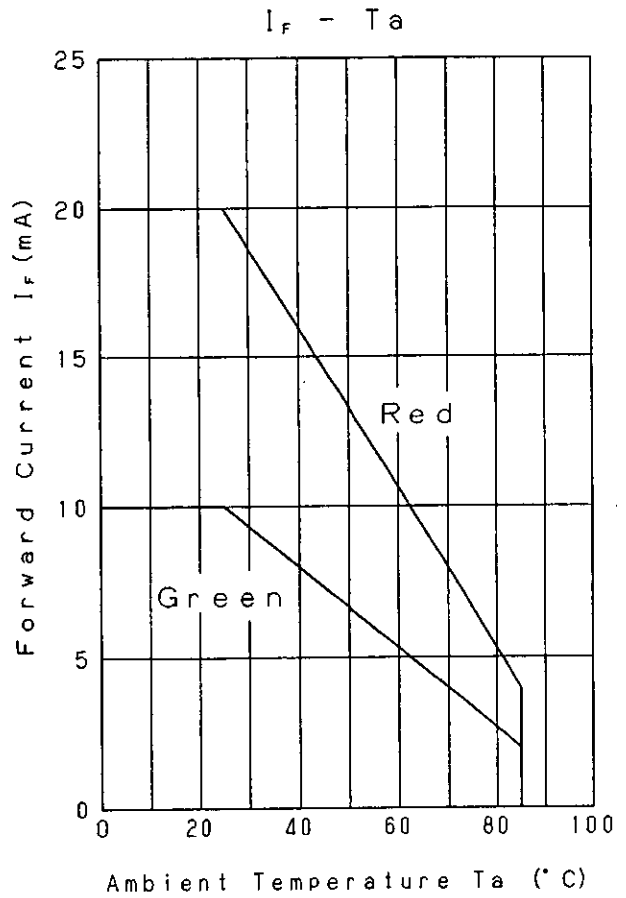
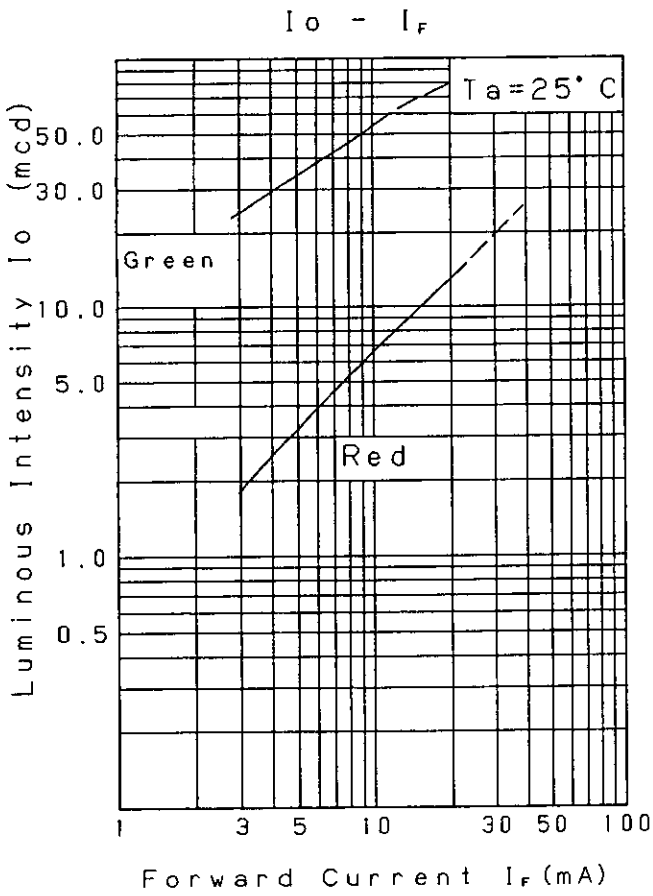
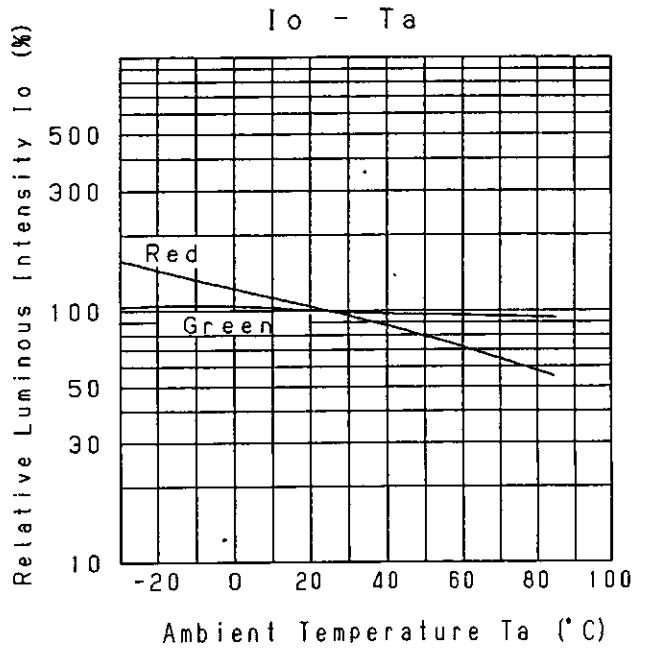
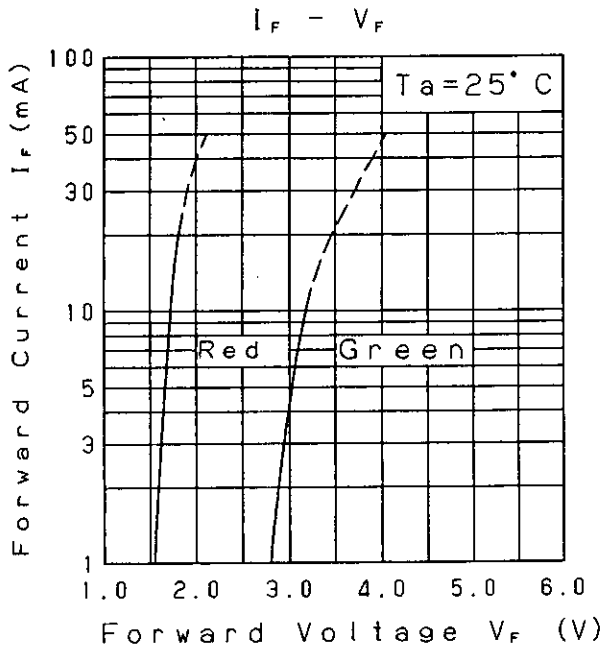
DEVELOPMENT SPECIFICATION

T. Oheda
M. W.
K. Akita

P/N: LNJI15W86RA

18

5



Jun. 28. 2001

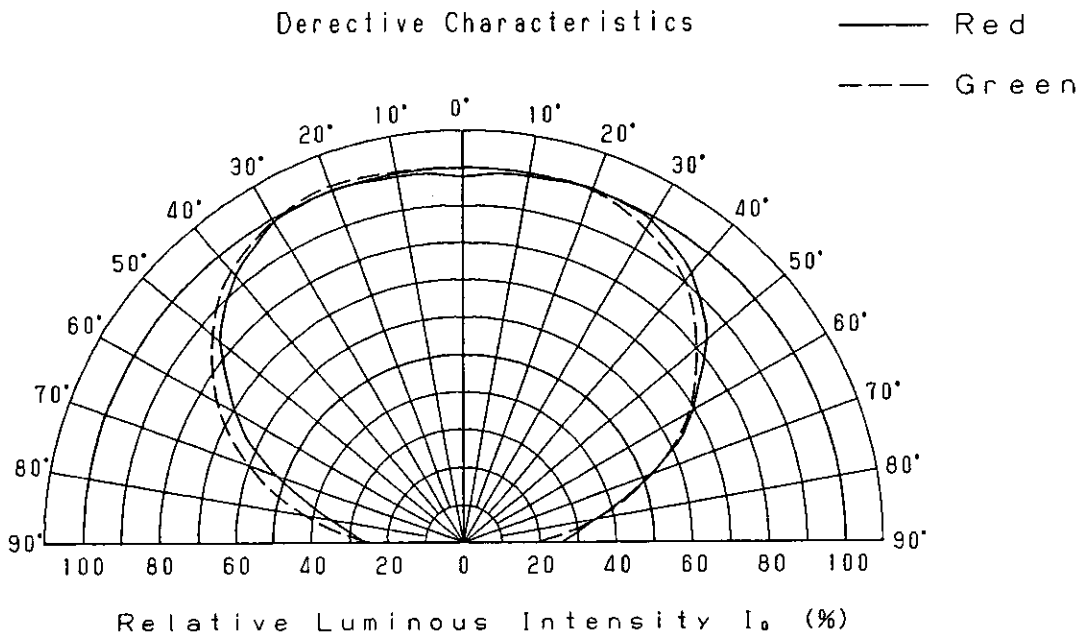
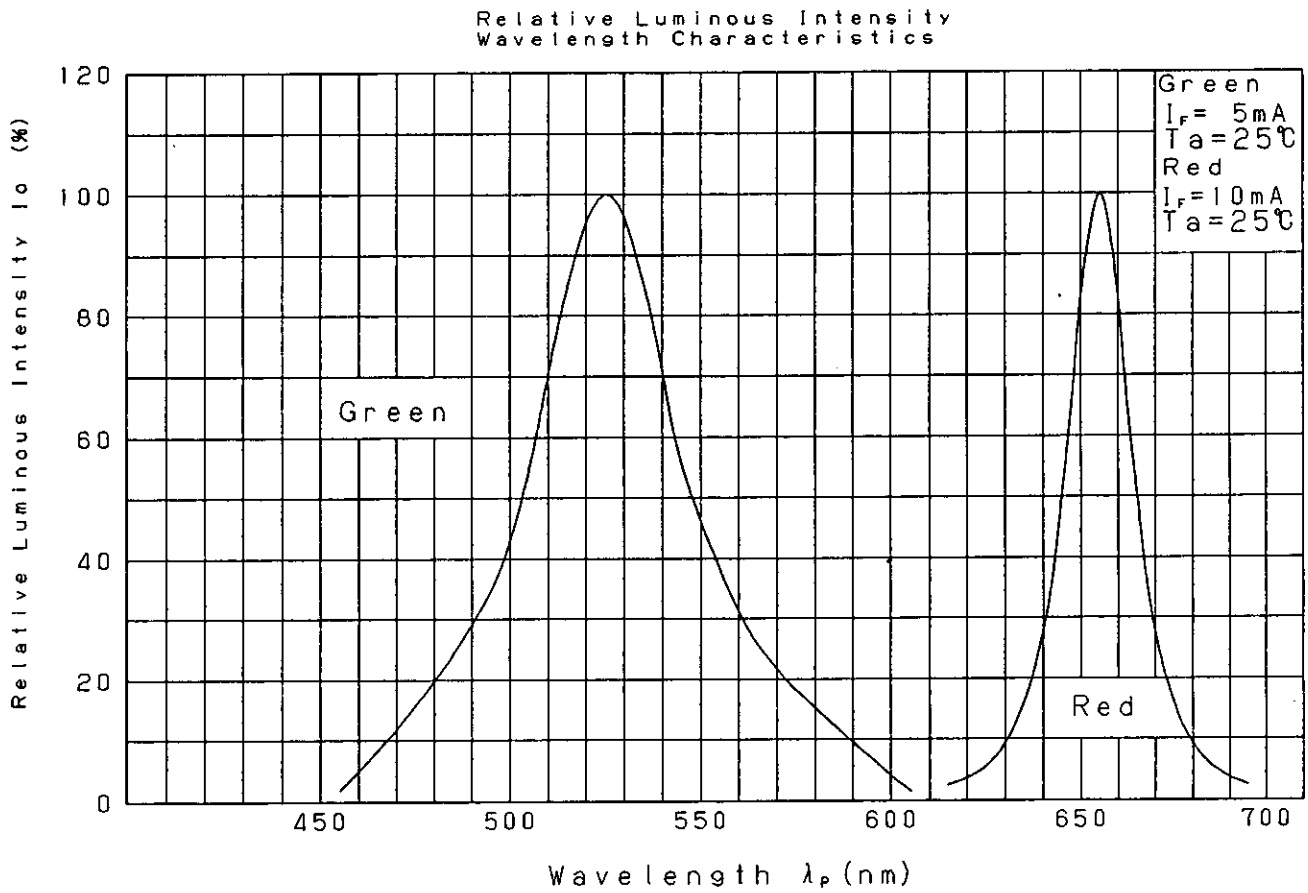
Approved <i>T. Shoda</i>	Checked <i>M. Iw</i>	Designed <i>K. Sakai</i>
-----------------------------	-------------------------	-----------------------------

DEVELOPMENT SPECIFICATION

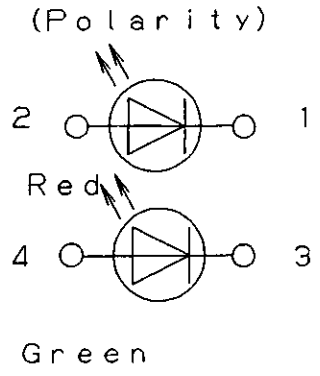
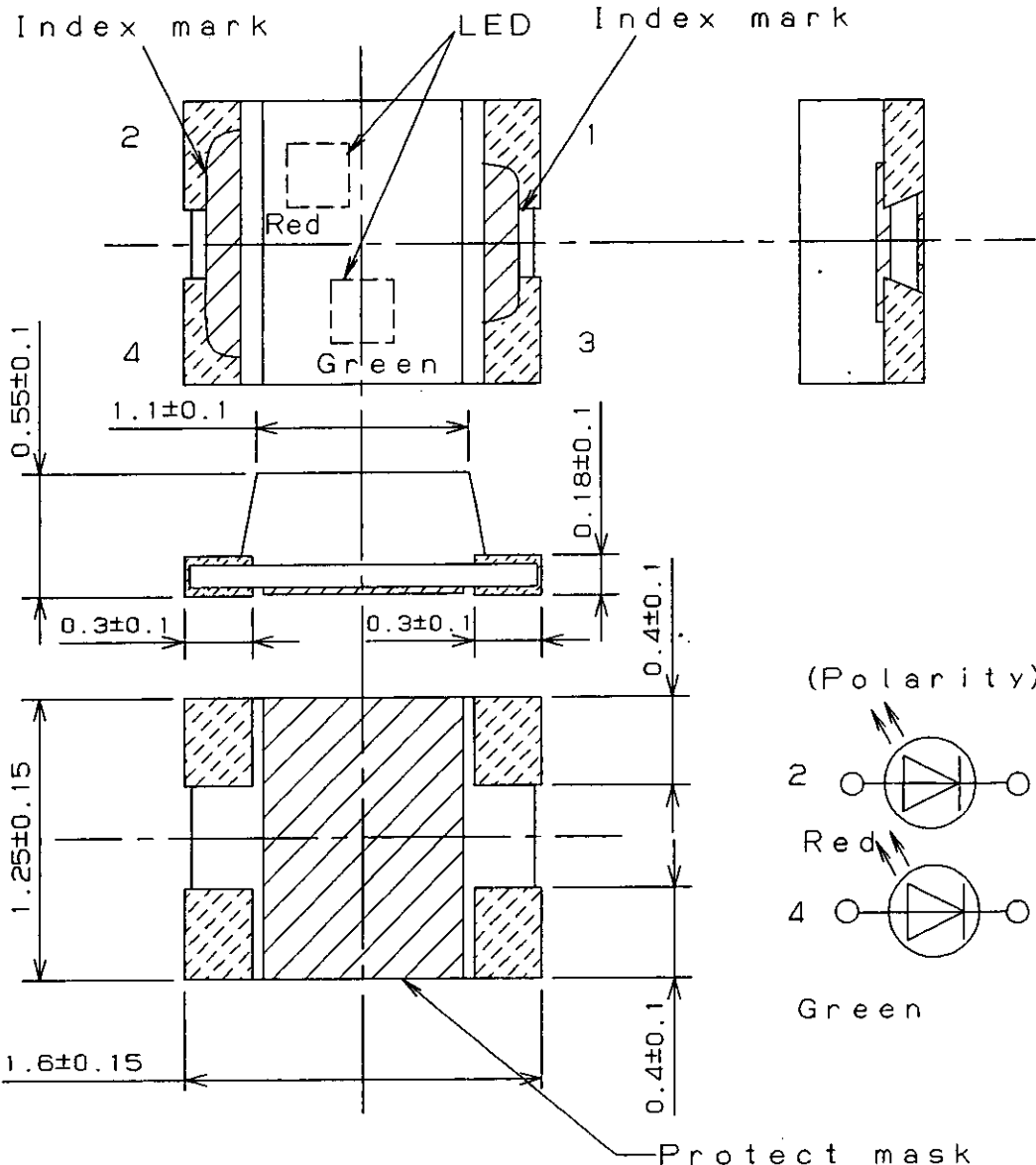
P/N: LNJ115W86RA

18

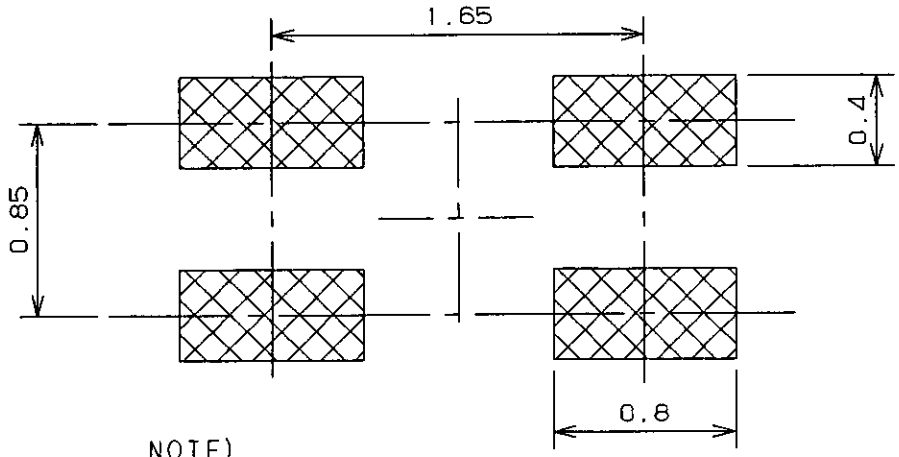
6



Jun. 28. 2001



(Recommended Land Layout)



NOTE)

1. Dimension of package doesn't include projections on electrode.
2. Unit:mm

Jun.28.2001			
-------------	--	--	--